

365 Residential

MILL PARK GARDENS, MILDENHALL

Mildenhall



- Mill Park Gardens
- En-Suite
- Open Plan Living Room
- Allocated Parking
- Very Spacious Apartment
- 3 Good Size Bedrooms
- Kitchen With Integrated Appliances
- Communal Gardens



Mill Park Gardens
Mildenhall

£1100pcm

A Much Larger Than Average Apartment, Communal Entrance Hall, Entrance Hall, Kitchen/Living Area, Three Bedrooms, Master Bedroom with En-Suite, Bathroom, Residents Parking, Communal Gardens, Gas Central Heating, UPVC Double Glazing. * No Pets * Viewings Strictly By Appointment.

Entrance Hall

Internal doors to all rooms, airing cupboard.

Outside

Residents parking and landscaped communal gardens.

Open Plan Living Room 12' 10" x 16' 1" (3.91m x 4.90m)

Kitchen 6' 5" x 11' 10" (1.95m x 3.60m)

Fitted kitchen with a range of integrated appliances.

Master Bedroom 11' 2" x 14' 1" (3.40m x 4.29m)

Window to rear, radiator.

En-suite 0' 0" x 0' 0" (0.00m x 0.00m)

Fully tiled, shower unit, WC and hand basin.

Bedroom 2 8' 10" x 15' 1" (2.69m x 4.59m)

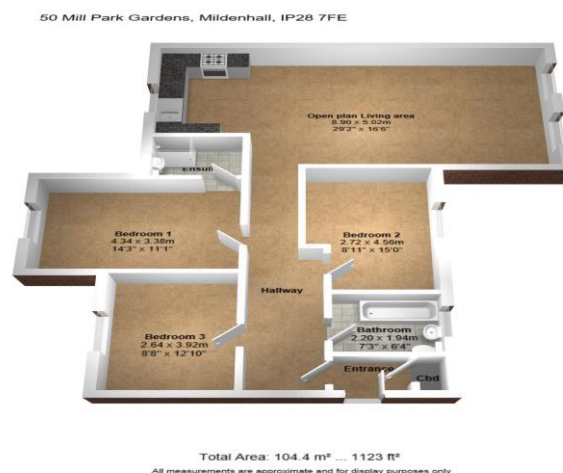
Window to rear, radiator.

Bedroom 3 12' 6" x 7' 10" (3.81m x 2.39m)

Window to rear, radiator.

Bathroom

Fitted white suite with shower over bath.



Energy Performance Certificate

50, Mill Park Gardens, Mildenhall, BURY ST. EDMUNDS, IP28 7FE

| | | | |
|-----------------------------|----------------|----------------------------|--------------------------|
| Dwelling type: | Mid-floor flat | Reference number: | 0050-2821-7462-9493-9591 |
| Date of assessment: | 19 June 2017 | Type of assessment: | RdSAP, existing dwelling |
| Date of certificate: | 19 June 2017 | Total floor area: | 104 m ² |

Use this document to:

- Compare current ratings of properties to see which properties are more energy efficient

Estimated energy costs of dwelling for 3 years: £ 1,461

Estimated energy costs of this home

| | Current costs | Potential costs | Potential future savings |
|---------------|--------------------|--------------------|--------------------------|
| Lighting | £ 216 over 3 years | £ 216 over 3 years | Not applicable |
| Heating | £ 909 over 3 years | £ 909 over 3 years | |
| Hot Water | £ 336 over 3 years | £ 336 over 3 years | |
| Totals | £ 1,461 | £ 1,461 | |

These figures show how much the average household would spend in this property for heating, lighting and hot water and is not based on energy used by individual households. This excludes energy use for running appliances like TVs, computers and cookers, and electricity generated by microgeneration.

Energy Efficiency Rating

